



CLASS NOTES-ANSWERS

1. Correct the following statements and rewrite them in your notebook.

a) Stem absorbs water and minerals from the soil.

Answer: Root absorbs water and minerals from the soil.

b) Leaves hold the plant upright.

Answer: Stem holds the plant upright.

c) Roots conduct water to the leaves.

Answer: Stems conduct water to the leaves.

d) The number of petals and stamens in a flower is always equal.

Answer: The number of petals and stamens in a flower may not always be equal.

e) If the sepals of a flower are joined together, its petals are also joined together.

Answer: If the sepals of a flower are joined together, its petals are separate.

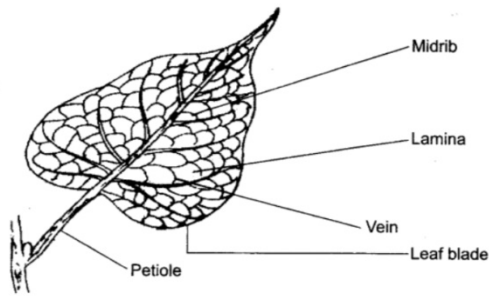
f) If the petals of a flower are joined together, then the pistil is joined to the petal.

Answer: If the petals of a flower are joined together, then the pistil may or may not be joined to the petal.

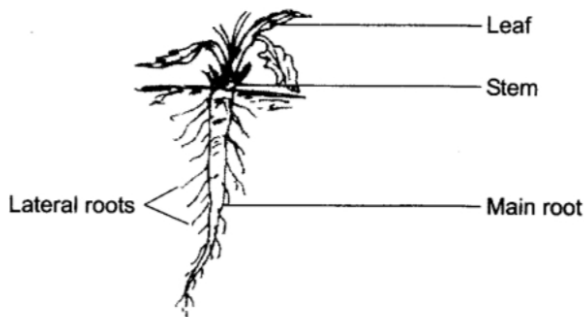
2. Draw a) a leaf, b) a taproot, c) a flower, you have studied for Table 7.3.

Answer:

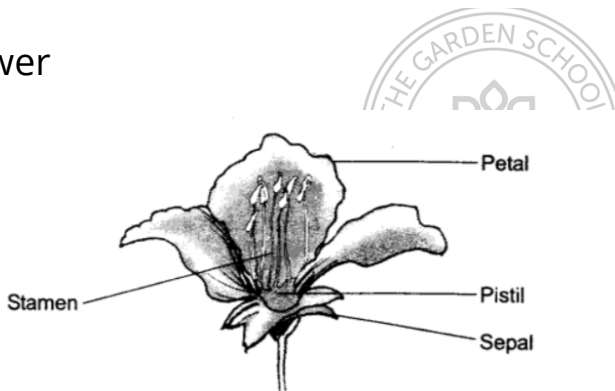
a) a leaf



b) a taproot



c) a flower



3. Can you find a plant in your house or in your neighborhood, which has a long but weak stem? Write its name. In which category will you place it?

Answer: Yes, we find a money plant, which needs support. It is a climber.

4. What is the function of a stem?

Answer: A stem performs following functions:

- a) Stem holds the plant upright.
- b) Stem bears leaves, flowers and fruits.
- c) Stem and its branches hold leaves to get maximum sunlight.



d) Stem transports water and minerals from the roots to the leaves.

e) Stem transports food from leaves to different parts of the plant.

5. Which of the following leaves have reticulate venation?

Wheat, tulsi, maize, grass, coriander [dhania], china rose

Answer: Tulsi, coriander and china rose have reticulate venation.

6. If a plant has fibrous root, what type of venation do its leaves have?

Answer: If a plant has fibrous root, its leaves have parallel venation.

7. If a plant has leaves with reticulate venation, what kind of roots will it have?

Answer: If a plant has leaves with reticulate venation, it will have a taproot.

8. Is it possible for you to find out whether a plant has taproot or fibrous roots

by looking at the impression of its leaf on a sheet of paper?

Answer: Yes, it is possible to find whether a plant has taproot or fibrous roots by looking at the impression of its leaf on a sheet of paper. If a plant has leaves with reticulate venation, it will have a taproot. If a plant has leaves with parallel venation, it will have fibrous roots.

9. What are the parts of a flower?

Answer: The parts of a flower are petals, sepals, stamen and pistil.

10. From the following plants, which of them have flowers?

Grass, maize, wheat, chilli, tomato, tulsi, peepal, shisham, banyan, mango, jamun, guava, pomegranate, papaya, banana, lemon, sugarcane, potato, groundnut

Answer: The plants which have flowers are grass, maize, wheat, chilli, tomato, tulsi, peepal, shisham, banyan, mango, jamun, guava,



pomegranate, papaya, banana, lemon, sugarcane, potato, groundnut

11. Name the part of plant which produces food. Name the process.

Answer: Leaves produce food through a process called photosynthesis.

12. In which part of a flower, you will find the ovary?

Answer: The ovary is found in the lowermost and most swollen part of the pistil.

13. Name two plants in which one has joined sepals and the other has separate

sepals?

Answer:

Plants with joined sepals – Datura and cotton

Plants with separate sepals – Rose and lotus

