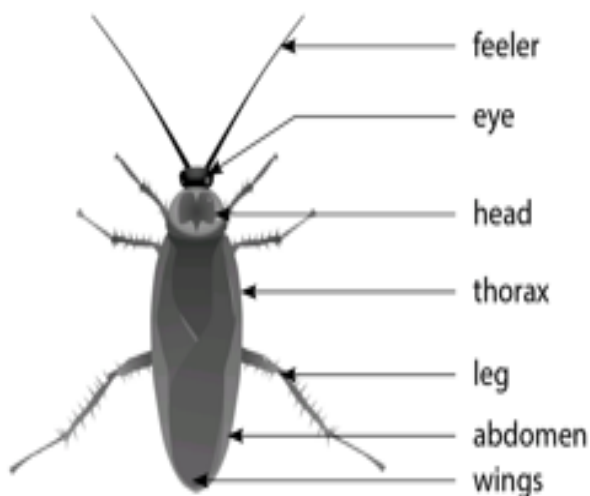


CLASS NOTES-ANSWERS

I. Tick the correct reason for each of the following.

1. There are tiny holes on the body of insects.
 - a. These holes are necessary for eating food.
 - b. These holes are necessary for breathing.
2. The tiny holes on an insect's body are connected to tubes.
 - a. The tubes help the air to reach every part of the insect's body.
 - b. The tubes help the insect to move faster.
3. Moths, honeybees and butterflies are often found near flowers.
 - a. They like the smell and varied colours of flowers.
 - b. They feed on nectar produced by flowers.
4. Ladybird beetles are called 'farmer's friends'.
 - a. They feed on insects that damage plants.
 - b. They feed on leaves of plants.

II. Draw pointers and label the body parts of the cockroach.



III. Answer the following questions.



1. List the body parts present on the head of an insect and state their functions.

Answer:

The head has a pair of eyes, mouth parts and two feelers or antennae. The eyes help the insect to see, the mouth parts help it to eat and the antennae help the insect to feel and smell things.

2. How do insects breathe?

Answer:

There are tiny holes on the body of insects through which they breathe. These holes open into fine tubes. There is a network of such tubes in the body of the insect, which helps air to reach every part of the body

3. Name the insects that feed on other insects.

Answer:

Dragonflies and ladybird beetles feed on other insects.

4. What do dung beetles and termites eat?

Answer:

Dung beetles feed on animal dung. Termites feed on roots and wood of dead trees.

5. Where does a mosquito lay eggs?

Answer:

Mosquitoes lay eggs in standing water.

Higher Order Thinking Skills

Look at the pictures of these animals. Name them. Find out where they live. Are they insects? Why? Why not?



Answer:

1. house lizard—lives in houses
2. spider—lives in all environments, both outdoors and indoors
3. earthworm—lives in the soil.

None of the above animals are insects as their bodies are not divided into head, thorax and abdomen.

